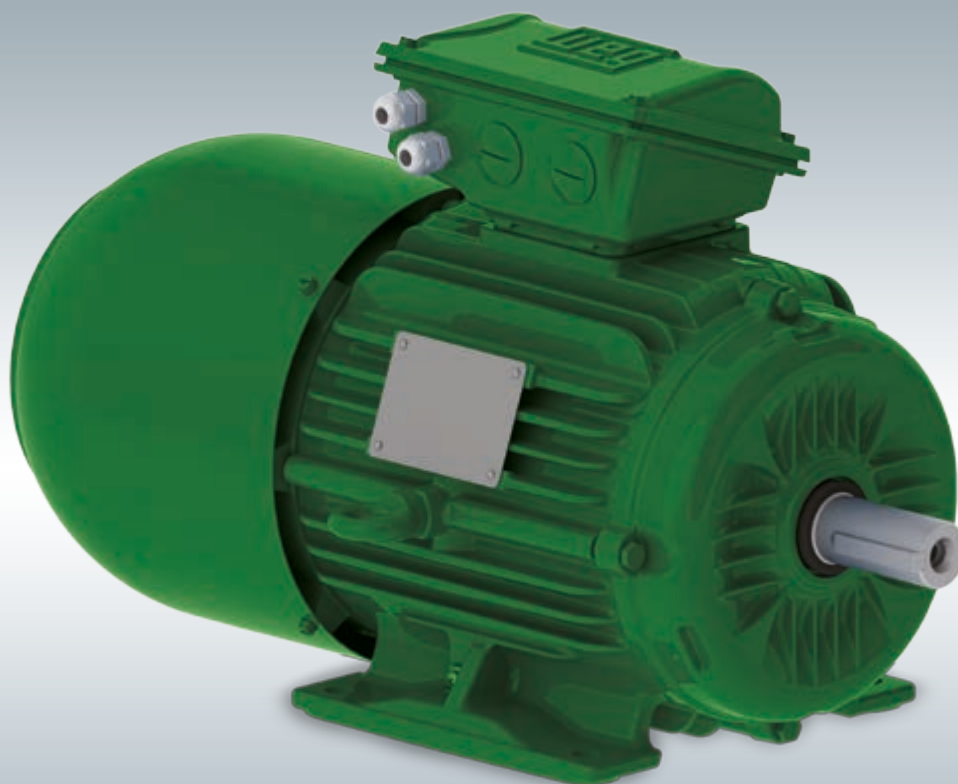


W22 Brake Motor



Three Phase Electric Motor

Standard Features

- Rated output: 0.12 kW to 75 kW
- Number of poles: 2 to 8
- Frame sizes: 63 to 250S/M
- Frequency: 50 Hz
- Voltage:
 - 220-240/380-415//440-460 (frame sizes 63 to 100L)
 - 380-415/660//440-460 (frame sizes 112M to 250S/M)
- Brake power supply voltage: 220-240 V
- Insulation class: F (DT 80K)
- Degree of Protection: IP55
- Mounting configuration: B3T
- Cooling method: TEFC (IC411)
- Ball bearings
- DE sealing:
 - V'ring (frame sizes 63 to 200L)
 - WSeal® (frame sizes 225S/M and 250S/M)
- NDE sealing: lip seal

Optional Features

- Mounting configuration: B35, B5, V1, V3, V6, etc.
- Degree of Protection: IP56, IP65, IP66
- DE sealing: W3 Seal, labyrinth tachonite INPRO/SEAL®
- Vibration level: Grade B
- Winding thermal protection: thermostat and thermistor
- Space heaters
- Cable gland
- Drip cover for vertical mounting configuration
- Encoder
- Insulation class: "H"
- Suitable for VFD application*
- Manual brake release system (for IP55 motors, frame sizes 63 to 200)**
- Microswitch for air gap monitoring or brake release
- Brake power supply voltage:
 - 380-415 V
 - 440-480 V

* Motors suitable for VFD application must be supplied with winding thermal protection.

** Not available for frames 63 to 80 with terminal box on top



W22 Brake Motor

New platform, new brake, outstanding performance!

The new brake motor has been designed with identical technical features of the WEG W22 motor platform, with emphasis to a new breaking system and others such as:

- Frame design that allows cooling air optimization and improves the heat exchange
- Terminal box with bigger internal space for cables connection and service
- Solid feet for easier motor installation and alignment
- Frame structure with improved mechanical strength and low vibration levels

This product is ideal for applications where sudden, precise and safe shutdowns are required, other than allowing control of positioning and energy saving.

Braking system optimization:

New brake

- The new brake friction material reduces the wear.
- It is in line with the world's trend of brakes platform (interchangeability).
- It allows safer, fast and precise braking.
- The brake system includes low number of additional parts, what requires low shutdowns for maintenance.

Manual release system (optional)

- This system allows the motor to remain free at emergency conditions or whenever required.

Standardized torques

- Torques are defined based on frame size to allow shorter braking time.

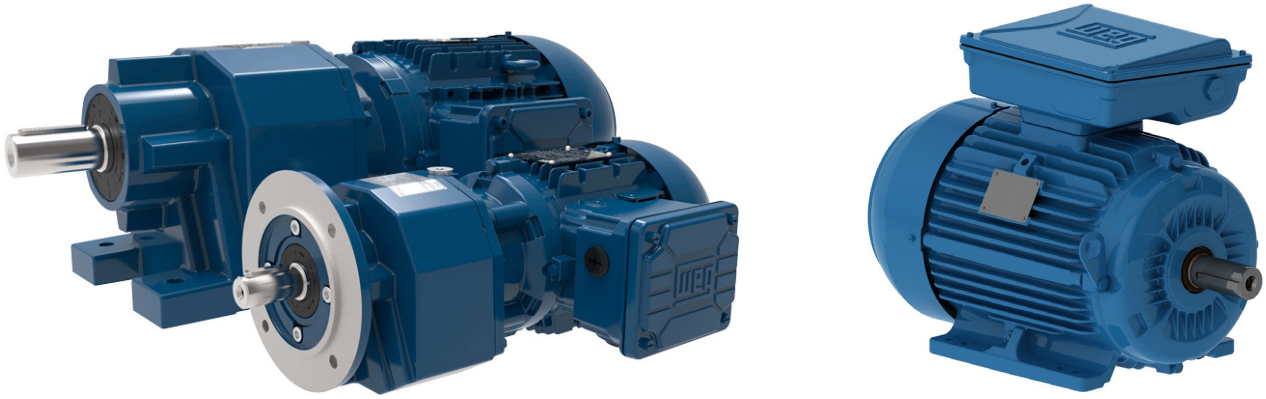
Microswitch (optional)

- Sensor for brake release monitoring (I/O) or brake wear
- It indicates when the brake needs to be replaced, hence not requiring manual monitoring.

Rectifier

- It allows operation with voltage fluctuation up to 10%.
- Tough and compact construction allowing to be fitted inside the motor main terminal box.





Industrial Motors and Gears Limited

Tel. 01642 467999 | Mob. 07815 889460

Fax. 01642 467988

Email. sales@imag-uk.com

Web. www.imag-uk.com

The Quality Choice

Industrial Motors and Gears Limited is a limited company
registered in England and Wales.

Registration Number 4293316.

VAT Registration Number 780154731.